



DIAMOND
INDUSTRIAL PARK

The logo features a stylized diamond shape on the left, composed of white and gold lines. To its right are several interlocking gears of different sizes, also in white and gold. Above the diamond and gears are several curved, parallel lines in a gold color, suggesting motion or a path.

BUILT FOR BUSINESS
DESIGNED FOR PROGRESS



Diamond
INDUSTRIAL PARK



Diamond
INDUSTRIAL PARK



PROJECT HIGHLIGHTS

31 UNITS

SINGLE GATED
ENTRY

1000-4500
Sqyds. Units

RETAIL
COMMERCIAL

PARK

FACILITY
AREA



**A THOUGHTFULLY
PLANNED HUB DESIGNED
TO EMPOWER
BUSINESSES & FOSTER GROWTH**



Welcome to **Diamond Industrial Park**, a thoughtfully planned hub designed to empower businesses and foster growth. Strategically located with excellent connectivity, our industrial park offers state-of-the-art infrastructure, spacious plots, and a range of amenities to meet the dynamic needs of modern industries.

Whether you're a startup looking for a launchpad or an established enterprise seeking expansion, **Diamond Industrial Park** provides a conducive environment for innovation and success. With sustainable development practices, 24/7 security, and a business-friendly ecosystem, we ensure your operations run smoothly and efficiently.



POWERING PROGRESS WITH SECURE, SUSTAINABLE & SMART AMENITIES



33 kva Electric
Sub Station



Single Gated
Entry



Water Tank 100000 litre
with Supply Line



Street Lights



24 Hours
Security



CCTV Cameras



Well Maintained
Landscape



Entry Gate with
Boom Barriers





STANDARD SPECIFICATION



WORLD CLASS INFRASTRUCTURE

Every corner of diamond industrial park reflects upon infrastructural excellence that defines comfort, innovation, sustainability and luxury. Premises that are designed as per international standards that emphasis over art of facilities.



WIDE ROADS

A smooth journey begins with Spacious roads that leads to hassle free living. Experience expansive and well connected roadways for better convenience.



POTABLE WATER

Embrace your living with pure and fresh potable water that flows freely to refresh your life.



STREET LIGHT

Step into the paths with blooming lit streets that illuminate your journey with security.



GSS 33 KV GRID STATION

Get constant power supply through GS 33 KV Grid station which generates seamless luxury experience day and night.



PARK

Get a green retreat for peaceful minds that surrounds you with nature's elegance amidst park of dreams.

ALL STATE AND CENTRE GOVT SUBSIDY & ALLIED BENEFITS AVAILABLE

- ✓ Stamp Duty Waiver
- ✓ Interest Waiver On Loaning
- ✓ Electricity Duty Waiver
- ✓ Capital Subsidy
- ✓ Many More Other Benefits



INFRASTRUCTURE

Transportation and Connectivity

- Roadways: Well-maintained roads for easy access and transportation of goods.

Utilities

- Electricity: High-power electric supplies, often including three-phase electric power, to meet industrial demands.
- Water Supply: Large-volume water supplies for industrial processes and daily operations.

Security and Safety

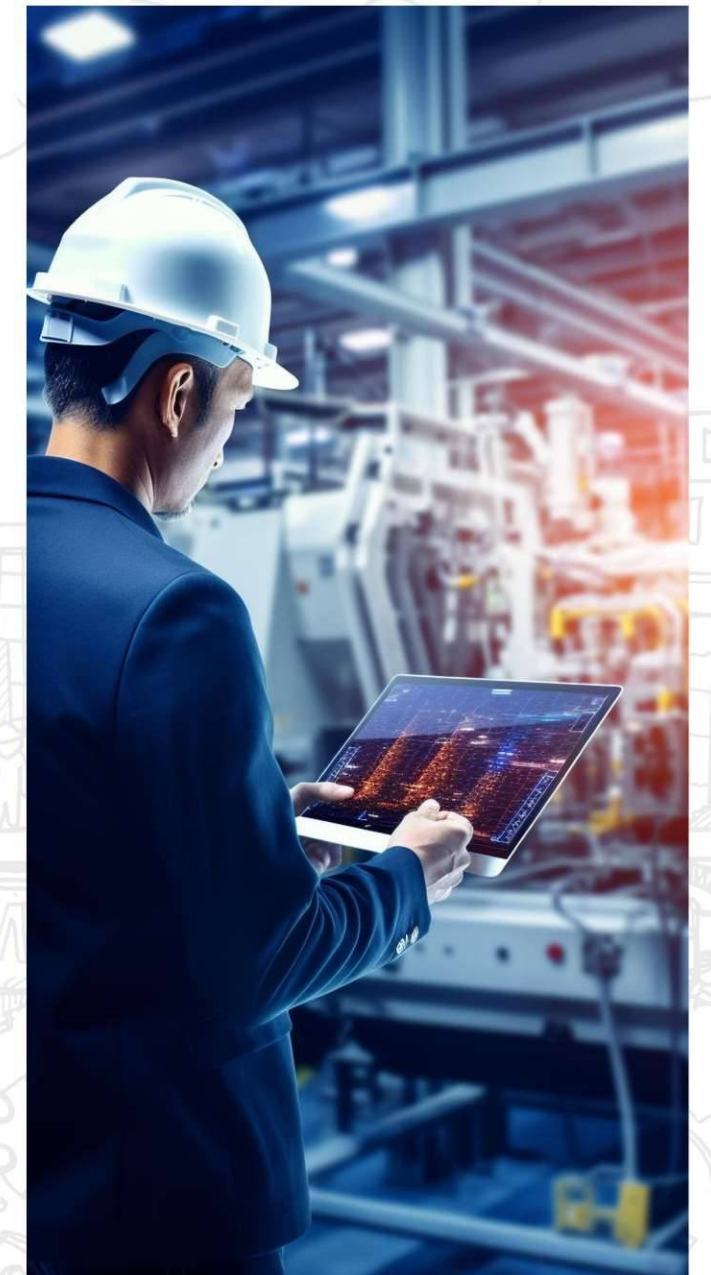
- Security Measures: Robust security systems to protect assets and ensure safety.



CRAFTED FOR VISIONARIES DRIVING INDUSTRIAL EXCELLENCE

BEST SUITABLE FOR BELOW INDUSTRIES

- ★ **Manufacturing Units:** Electrical, machinery, and equipment manufacturing.
- ★ **Warehousing and Logistics:** Distribution hubs requiring secure and well-lit spaces.
- ★ **Food Processing:** Units needing water supply and hygienic surroundings.
- ★ **Textile and Garments:** Industries seeking reliable utilities and infrastructure.
- ★ **Electronics Assembly:** Facilities requiring stable power and secure premises.
- ★ **Engineering Workshops:** Operations needing heavy power supply and 24/7 security.
- ★ **Pharmaceuticals:** Units needing consistent utilities and a controlled environment.
Packaging Industries: Requiring spacious layouts and ease of access.





PRAKASH AGARWAL



THE GROUP

Having over 25 years of experience, Prakash Agarwal have redefined the standards of serving clients with hardwork, commitment and dedication. Inclined towards strong roots, Imperial Group aims to create place that everyone would call it their 'Home' proudly. Today the company has grown into a large business conglomerate with varied diversified plans ahead with the determination to establish itself as a stalwart in its domain. Imperial Group is a team of highly skilled, technical as well as non-technical professionals. Imperial Group's aim is to surpass our customer's aspirations.



IMPERIAL GARDEN
Vidhyadhar Nagar, Jaipur



IMPERIAL UTSAV
Road No. 14, Sikar Road, Jaipur



KRISHNA RESIDENCY
Bhankrota, Sirsi Road, Jaipur



IMPERIAL Ville
Gandhipath West, Vaishali Nagar, Jaipur



SHIVAM AGARWAL



THE GROUP

Shivam Agarwal, recognised as an expert in industrial area have set benchmarks in efficiency over 15 years. His commitment towards creation of sustainable living spaces is highly inspiring. Having vision to transform urban living, Shivam Infra has been at the forefront of innovative real estate solutions since its inception.

Our projects are designed to offer a perfect blend of comfort, elegance, and modernity, ensuring an exclusive lifestyle for our residents. Establishing focus on quality and customer satisfaction, we strive to exceed expectations at every stage of development.

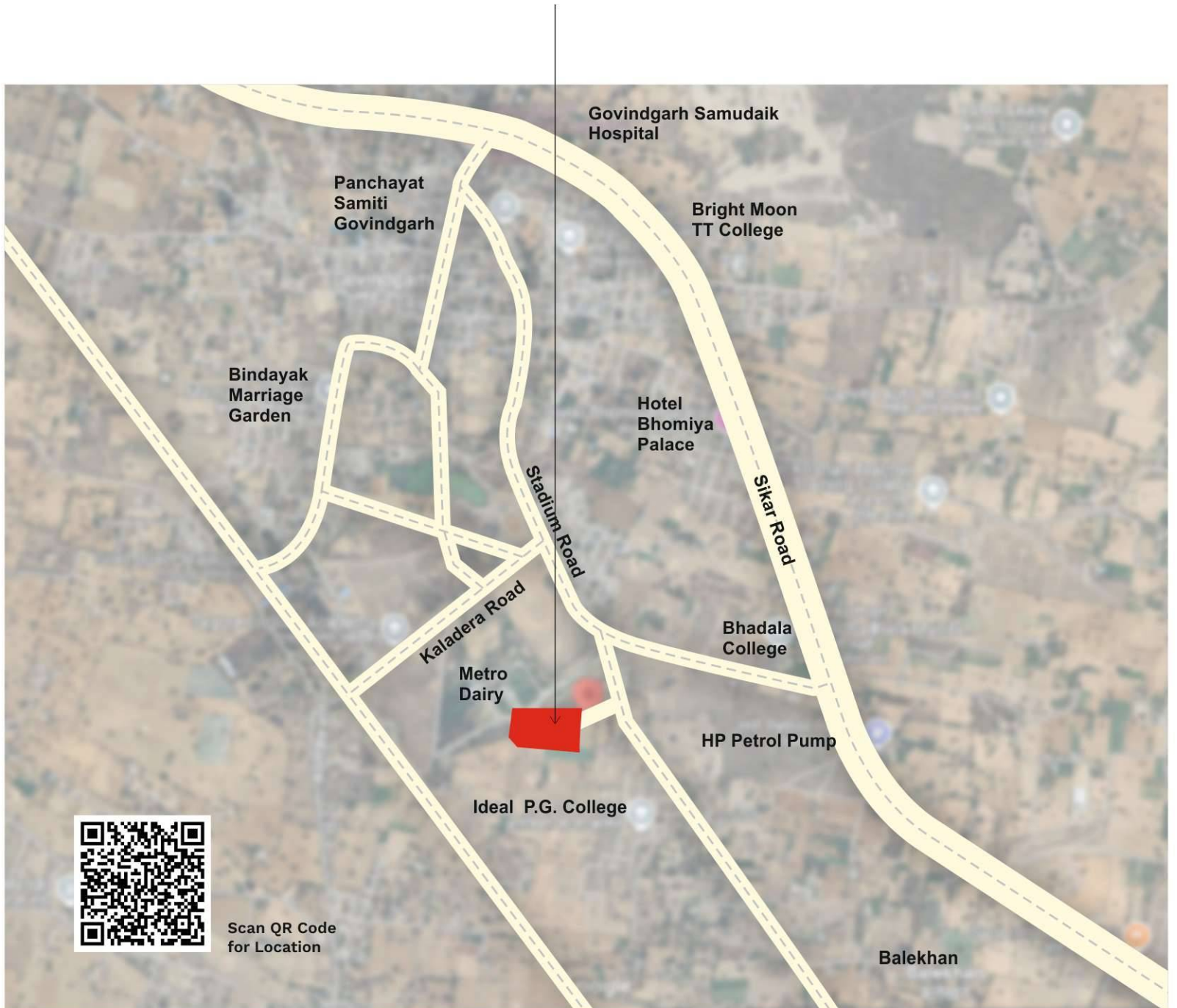
Our professionals works tirelessly to bring your dream home to life, providing exceptional service and attention to detail. At Shivam Infra, we believe in building not just houses, but homes that foster a sense of community and well-being.

ONGOING & UPCOMING PROJECTS

- Dream City, Chomu, Morija Road
- Balaji Industrial City, Govindgarh
- Dwarika City, Jaitpura Chomu
- Quality Industrial Park, Kaladera
- Shyam Enclave, Jaipur Road, Chomu



Site : Village Govindgarh, Th. Chomu, Jaipur (Raj.)



Shivam Infratech
Near Vinayak Fracture Hospital,
Jaipur Road, Chomu

Contact for more details :
+91 9982434466, 9351922895